

WATER SUPPLY OF CORFU AND PAXI ISLANDS. PHASE 1.

Country
GREECE

Location
Corfu and Paxi
Islands

Client
Ministry of
Environment,
Planning and Public
Works

Financing
Ministry of Public
Works

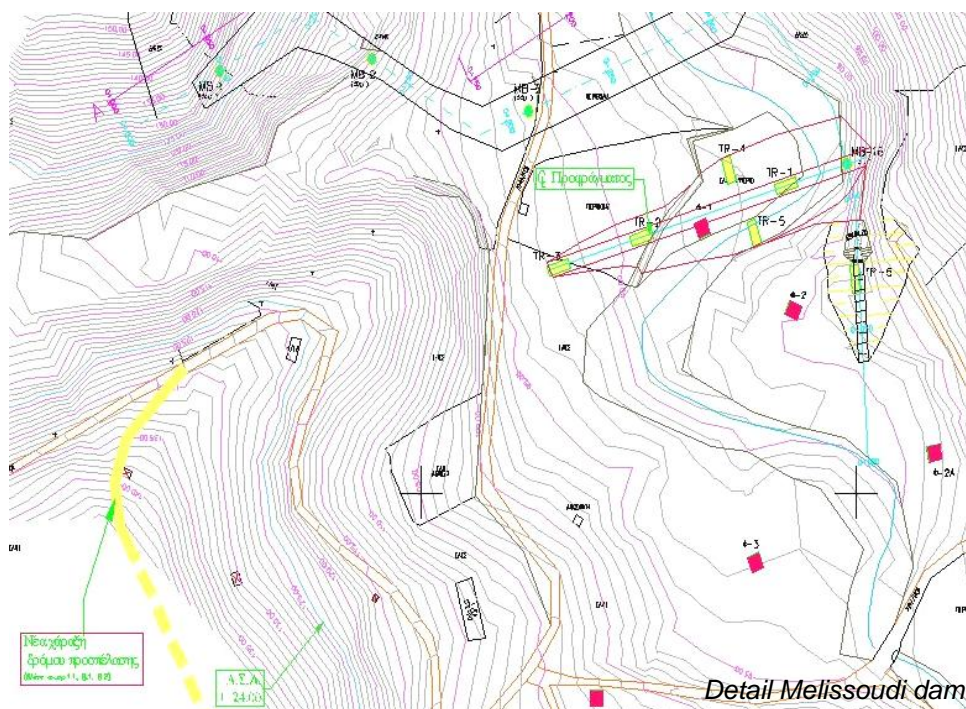
Project cost
161.5 M EUR

**Overall consultancy
services**
2,834,000 EUR

Services of ENB
1,275,300 EUR

Project Duration
10/1994 – 02/2003

Associated Firms
HYDROTEC (GR),
LDK Ltd (GR).



Project Description

The project aims at supplying good quality potable water in sufficient quantities to the islands of Corfu and Paxi including the city of Corfu and 11 more municipalities, hotel complexes, and touristic installation (total population of 260,000 inhabitants and 140,000 tourists).

The works include two dams/reservoirs (capacity 6,500,000 m³ and 1,300,000 m³), one diversion and one regulation dam, two water treatment (reverse osmosis) plants (capacity 10,000 and 2,700 m³/day) one sea water desalination (reverse osmosis) plant (total capacity 500 m³/day at Paxi) and new aqueducts for both islands connecting all existing and envisaged water supply sources. New reservoirs for the city of Corfu and rehabilitation of the water distribution network (L=21 km), reinforcement of existing water supply system and rehabilitation of existing reservoirs. Main conduits (L=15 km) for the city of Corfu and new pumping station.

Services

- Necessary preparatory works including geological, hydrogeological and geotechnical studies and investigations, water analyses and water flow measurements
- Preparation of specifications to carry out field work and studies to reduce and control water leakage. Implementation of first stage relevant documents
- Financial/Cost benefit studies
- Preliminary, Detailed design and Tender Documents of the reservoir of 10,000 m³ - city of Corfu
- Hydraulic model including calibration
- Detailed design and Tender Documents for the main conduits of the city of Corfu