

WATER SUPPLY OF CORFU AND PAXI ISLANDS. PHASE 2

Country

GREECE

Location

Corfu and Paxi
Islands

Client

Ministry of
Environment,
Planning and Public
Works

Financing

Ministry of Public
Works

Project cost

93.5 M EUR

Overall consultancy services

1,642,000 EUR

Services of ENB

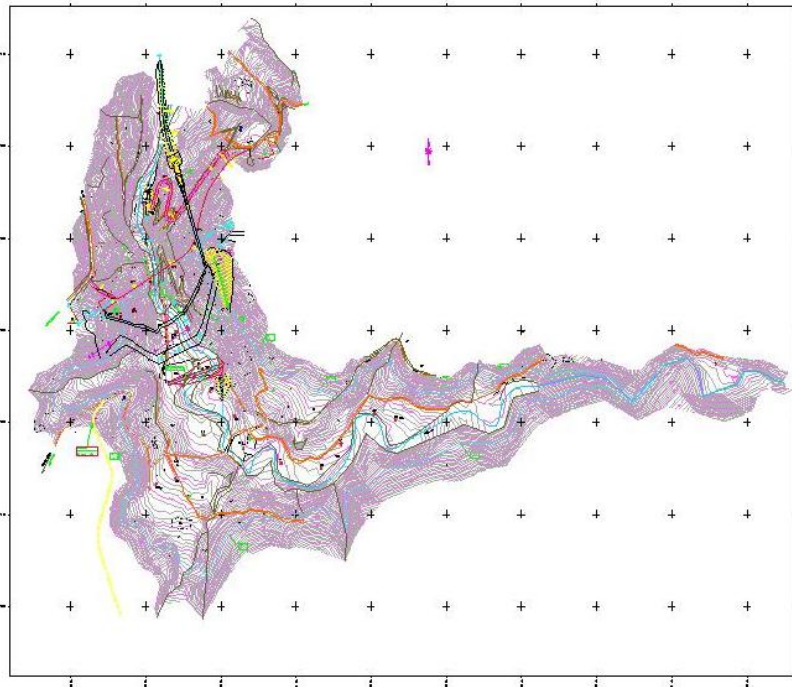
541,900 EUR

Project Duration

11/2002 – 03/2006

Associated Firms

ADK S.A.,
HYDROTEC Ltd,
SSE Ltd,
GEOLOGIKI
IPOSTIRIXI Ltd.



Project Description

The project aims at supplying good quality potable water in sufficient quantities to the islands of Corfu and Paxi including the city of Corfu and 11 more municipalities, hotel complexes, and touristic installation (total population of 260,000 inhabitants and 140,000 tourists).

The project includes the following works :

- Kyprianades dam ($H=13.0$ m, $V=3,800$ m³) and Melissoudi II dam ($H=11$ m, $V=270,000$ m³). Preliminary Design.
- Main transfer conduits ($L=60$ km, DN 300 ÷ 700 mm). Preliminary Design.
- Distribution network ($L=150$ km, DN 160 ÷ 400 mm). Preliminary Design.
- 7 main reservoirs (1,000 to 10,000 m³) and 6 pumping stations ($Q=160\div 1,800$ m³/h, $h_m=90\div 180$ m). Preliminary and Detailed Design, Tender Documents.
- Melissoudi I dam ($H=45$ m, $V_w=6.5\times 10^6$ m³) and Kalamiotissa earth dam ($H=25$ m, $V_w=1.3\times 10^6$ m³). Preliminary Design.
- Tunnel Kyprianades ($L=730$ m, $D=3.0$). Preliminary Design.
- Water treatment station in Neohoraki (2,700 m³/day) and desalination station of sea water at Paxi (500 m³/day) by reverse osmosis. Preliminary Design.
- Water treatment plant at Melissoudi (capacity: 45,000 m³/day). Preliminary Design and Tender Documents.
- Water treatment plant at Kalamiotissa (capacity: 7,000 m³/day). Preliminary Design.

Services

- Preliminary and Detailed Designs
- Tender Documents
- Studies to reduce and control water leakage
- Environmental impact assessment studies
- Preparation of Cohesion Fund application for co-funding of the project
- Topographical surveys
- Necessary preparatory works including geological, hydrogeological and geotechnical studies and investigations, water analyses and water flow measurements
- Hydraulic model

ENB Ltd